

NEXT PDU / aPDU / iPDU

NEXT PDU (Basic PDU)

The perfect solution for improving availability and adding flexibility for single phase UPSs.



NEXT PDU - BE/FR - Ref. NEXT: 88012



NEXT PDU - NL/LU - Ref. NEXT: 88014



NEXT PDU - IEC LOCK - Ref. NEXT: 88016

- Having the right connectors just where you need them
- NEXT PDU (Power Distribution Units) are flexible mounting multiway socket blocks for easy connection of multiple loads either as free-standing or on rack-mounted UPSs
- NEXT PDUs have a large number of sockets (7 French (BE/FR) or 8 Schuko (NL/LU) or 8 IEC-LOCK) which fit into a very compact unit (1U - 19")
- NEXT PDUs are easy to implement into any type of installation: they can be rack mounted horizontally (1U) or vertically
- Integrated IEC-LOCK Plug Retention: Prevents accidental disconnect from being bumped or from vibration (IEC version only).



Technical specifications PDU & aPDU

	NEXT PDU	NEXT aPDU
Maximum power	16A	
Nominal Voltage	220 - 240 V	
INSTALLATION		
Format	1,5U (except BS) 19" rack-mounting with multi-position mountings	
INSTALLATION		
Format	19" rack or wall mounting	
Dimensions H x W x D	62 x 490 x 46 mm	
CONNECTION		
Inputs	1 IEC C20 (16 A) connector and 1 cables (1 IEC LOCK - C19 16 A - IEC 10 A cable) for connection to any UPS	
MONITORING		
Amp (TOTAL)	-	Yes
Voltage (TOTAL)	-	Yes
OUTPUTS		
BE/FR	7	6
NL/LU	8	7
IEC-LOCK	8	7
NEXT PART NUMBERS		
BE/FR OUTLETS	88012	88023
NL/LU OUTLETS	88014	88024
IEC-LOCK OUTLETS	88016	88025

Product specifications are subject to change without prior notice

NEXT aPDU (Amp/Volt metered PDU)

NEXT aPDU (Amp/Volt metered Power Distribution Units (PDUs)) provide active metering to enable energy optimization and circuit protection. Amp/Volt metered PDUs provide power utilization data to allow Data Center Managers to make informed decisions on load balancing and right-sizing IT environments to lower the total cost of ownership. The NEXT aPDU series includes local real-time Amp/Volt monitoring and IEC-lock receptacles.



NEXT aPDU - BE/FR - Ref. NEXT: 88023



NEXT aPDU - NL/LU - Ref. NEXT: 88024



NEXT aPDU - IEC LOCK - Ref. NEXT: 88025

- Having the right connectors just where you need them
- Active local Amp/Volt monitoring



- NEXT aPDU (Power Distribution Units) are flexible mounting multiway socket blocks for easy connection of multiple loads either as free-standing or on rack-mounted UPSs
- NEXT aPDUs have a large number of sockets (6 French (BE/FR) or 7 Schuko (NL/LU) or 7 IEC-LOCK) which fit into a very compact unit (1U - 19")
- NEXT aPDUs are easy to implement into any type of installation: they can be rack mounted horizontally (1U) or vertically
- Integrated IEC-LOCK Plug Retention: Prevents accidental disconnect from being bumped or from vibration (IEC version only).

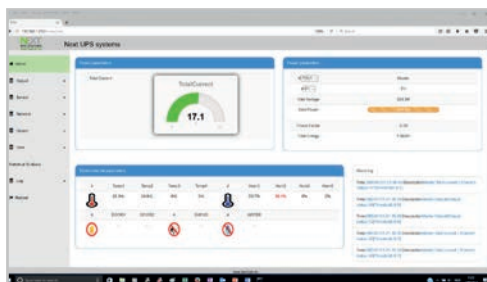


NEXT iPDU (Intelligent PDU)



NEXT iPDU's (Power Distribution Units) enable advanced, user-customizable power control and active monitoring. Remote outlet level controls allow power on/off functionality for power cycling to remotely reboot equipment and restrict unauthorized use of individual outlets. Power sequencing time delays allow users to define the order in which to power up or down attached equipment to avoid circuit overload. Current metering provides real-time remote monitoring of connected loads with user-defined alarms to warn of potential circuit overloads. Users can access, configure, and control iPDUs through secure Web, SNMP, Command Line Interface, or Telnet Interfaces.

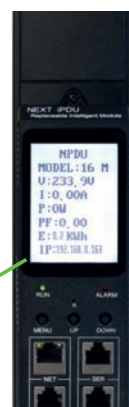
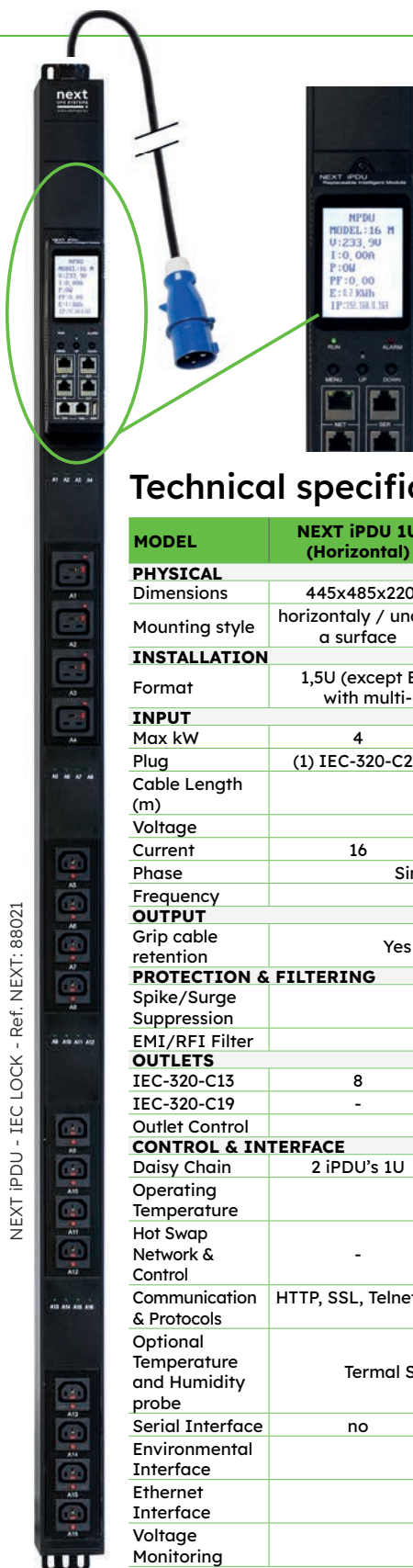
New NEXT iPDUs include real power monitoring, a temperature/humidity sensor port, and IEC-LOCK receptacles.



- **Easy Configuration:** includes central advanced LCD display with menu system (0U iPDU).
- **Central Communication and Alerts:** Read Current, Voltage, Power, kWhr and more, Interface allows easy identification of alerts. Easily monitor the status of your power distribution on the LCD (0U iPDU), via the web interface or via your management software.
- iPDUs are available in 0U to fit vertically on the back of a rack, or in 1U to be mounted horizontally in any server rack.
- Ensure the iPDU, plugs and cables are completely out of the way of equipment with button mount on the rear and sides.
- Choose to raise or lower the iPDU in the rack to suit your installation
- Active monitoring per outlet
- NEXT iPDUs have a large number of sockets:
 - 8 IEC-LOCK C13 (1U iPDU) which fit into a very compact unit (1U - 19")
 - 12 IEC-LOCK C13 & 4 IEC-LOCK C19 (0U iPDU)
- NEXT iPDUs are easy to implement into any type of installation: they can be rack mounted horizontally (1U) or vertically (0U)
- **Integrated IEC-LOCK Plug Retention:** Prevents accidental disconnect from being bumped or from vibration (IEC version only).



NEXT iPDU - IEC LOCK - Ref. NEXT: 88021



Technical specifications iPDU

MODEL	NEXT iPDU 1U (Horizontal)	NEXT iPDU 0U (Vertical)
PHYSICAL		
Dimensions	445x485x220	1490x67x76
Mounting style	horizontaly / under a surface	vertical only
INSTALLATION		
Format	1,5U (except BS) 19" rack-mounting with multi-position mountings	
INPUT		
Max kW	4	7.3
Plug	(1) IEC-320-C20	(1) IEC-309
Cable Length (m)	2	
Voltage	230V	
Current	16	32
Phase	Single Phase	
Frequency	50Hz	
OUTPUT		
Grip cable retention	Yes (IEC LOCK)	
PROTECTION & FILTERING		
Spike/Surge Suppression	none	
EMI/RFI Filter	none	
OUTLETS		
IEC-320-C13	8	12
IEC-320-C19	-	4
Outlet Control	Yes	
CONTROL & INTERFACE		
Daisy Chain	2 iPDU's 1U	5 iPDU's 0U
Operating Temperature	60°C.	
Hot Swap	-	Yes
Network & Control		
Communication & Protocols	HTTP, SSL, Telnet, FTP, SNMP, SMTP, DNS, DHCP	
Optional Temperature and Humidity probe	Termal SENSOR for iPDU	
Serial Interface	no	Yes
Environmental Interface	Yes	
Ethernet Interface	Yes	
Voltage Monitoring	Yes	
METERING AND SWITCHING		
Metering Characteristics	V, W, A and kWhr, Active power, Apparent Power, Peak Power	
Metering Accuracy	± 1%	
Circuit breaker status monitoring	Yes	
Switching	Outlet and Equipment Switching	
WARRANTY		
Standard Warranty	2 years	
NEXT PART NUMBERS		
NEXT iPDU	88020	88021
NEXT iPDU Termal Sensor	88022	